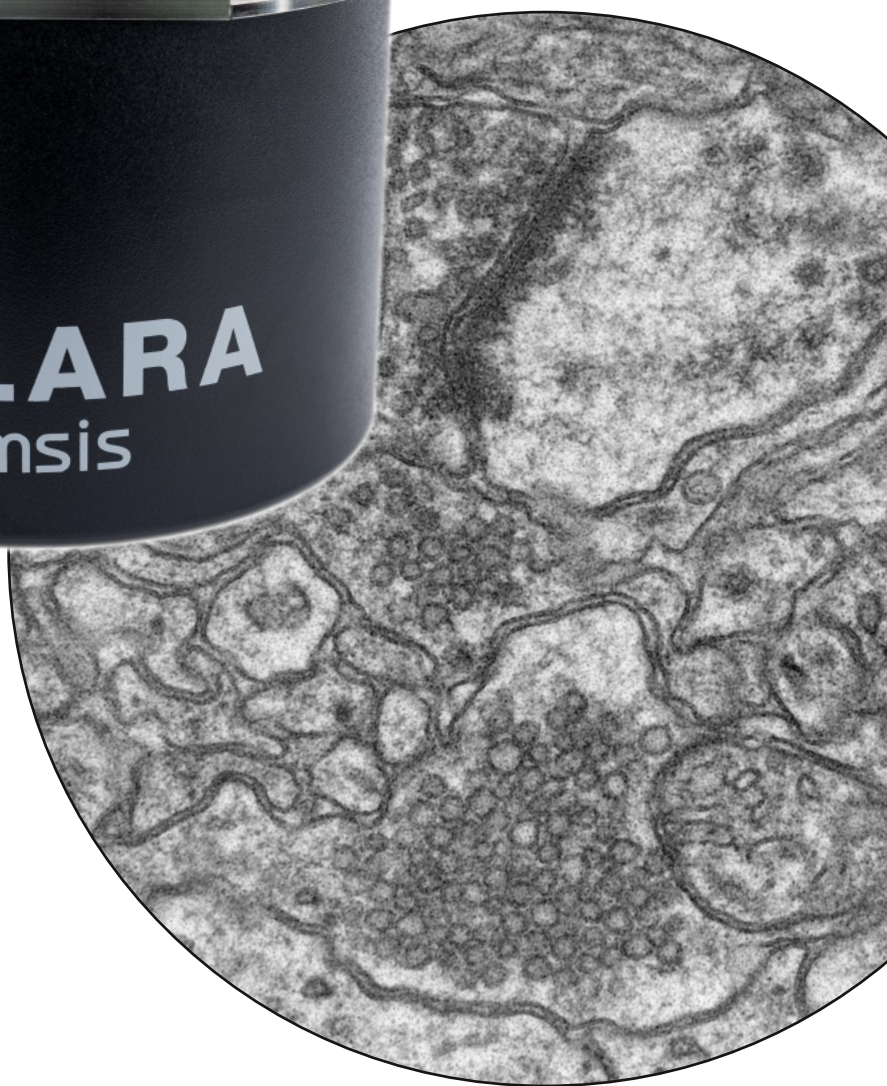




TOLARA

6 MEGAPIXEL BOTTOM-MOUNT CAMERA

Speed, quality and affordability



6 MEGAPIXEL

>28 FPS IN FULL RESOLUTION

FIBER OPTICS

AFFORDABLE

TOLARA

6 MEGAPIXEL BOTTOM-MOUNT HIGH-SPEED TEM CAMERA

With its 6 megapixel CCD image sensor it gives you all flexibility in speed and price performance ratio.

The brand new 6 megapixel TEM camera TOLARA for the bottom mount port for almost all current and legacy TEMs combines perfect image quality and high speed with a perfect price tag.

The TOLARA joins the long and successful portfolio of bottom mount TEM cameras by EMSIS. EMSIS' new TOLARA camera provides a convenient speed of at least 28 frames per second at its full 6 megapixel resolution, which makes the use of binning for speed enhancement superfluous. Nonetheless 2x and 4x binning is available for applications like diffraction, of which the TOLARA is fully capable of.

The tapered fiber optics have been carefully selected, based on EMSIS' long and exceptional experience. Its overall specifications and the electronics-sensor-optics combination make no compromises despite its affordable

pricing. The great versatility makes it the perfect choice the almost all standard Life and Materials Sciences applications. As such its not only the perfect companion of any standard TEM but also the camera of choice for retrofitting legacy TEMs or TEMs yet without any decent camera (check with EMSIS for compatibly).

It goes without saying that all the camera related sophisticated features of the current RADIUS version are also available with the TOLARA: smart averaging, live measurements, HDRI, movie recording, drift correction, "click-to-center", etc. – you may use them all with all EMSIS cameras, including our new TOLARA camera.

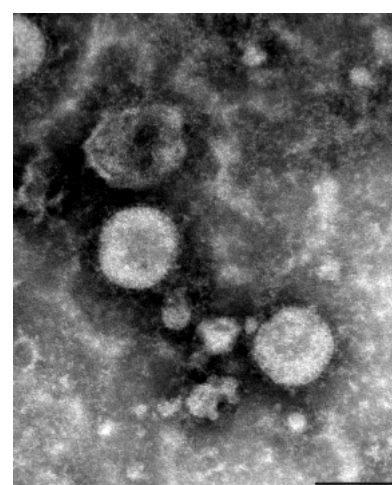
APPLICATIONS

ALL LIFE AND
MATERIALS SCIENCES

HR-TEM

DIGITAL
DOCUMENTATION

DIFFRACTION



Avian Coronavirus@ 18,500x

scale: 100 nm

SPECIFICATIONS

Camera	TOLARA
Model	B06U
Sensor	CCD
Image size (max.)	2,752 x 2,192 pixels
Effective pixel size	16.5 x 16.5 μm^2
Cooling	Passive air cooled
Frame rate	>28 fps at full resolution 70 fps at max. speed
Camera coupling	Fiber optics
Data interface	USB 3.0
Operating system	Windows 10 (64bit)
Imaging software	RADIUS 2.2
Mounting position	Bottom mount, on axis



中国地区产品咨询

Mail: enquiry@emsiasia.cn

Phone: +86 139 1060 7682

www.emsiasia.cn



EMSIS GmbH

Mendelstraße 17

48149 Münster, Germany

Phone: +49 (0)251 297962-0

Fax: +49 (0)251 297962-90

E-mail: info@emsis.eu

www.emsis.eu